



Long-Term Assistance & Services for Research Partners for University-Led Solutions Engine



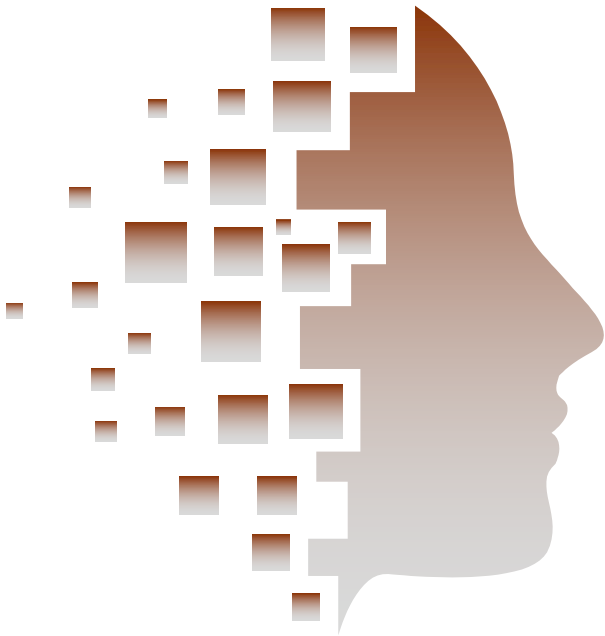
Pallavi Gupta
Program Director, LASER PULSE
Purdue University
gupta604@purdue.edu

What is LASER PULSE?



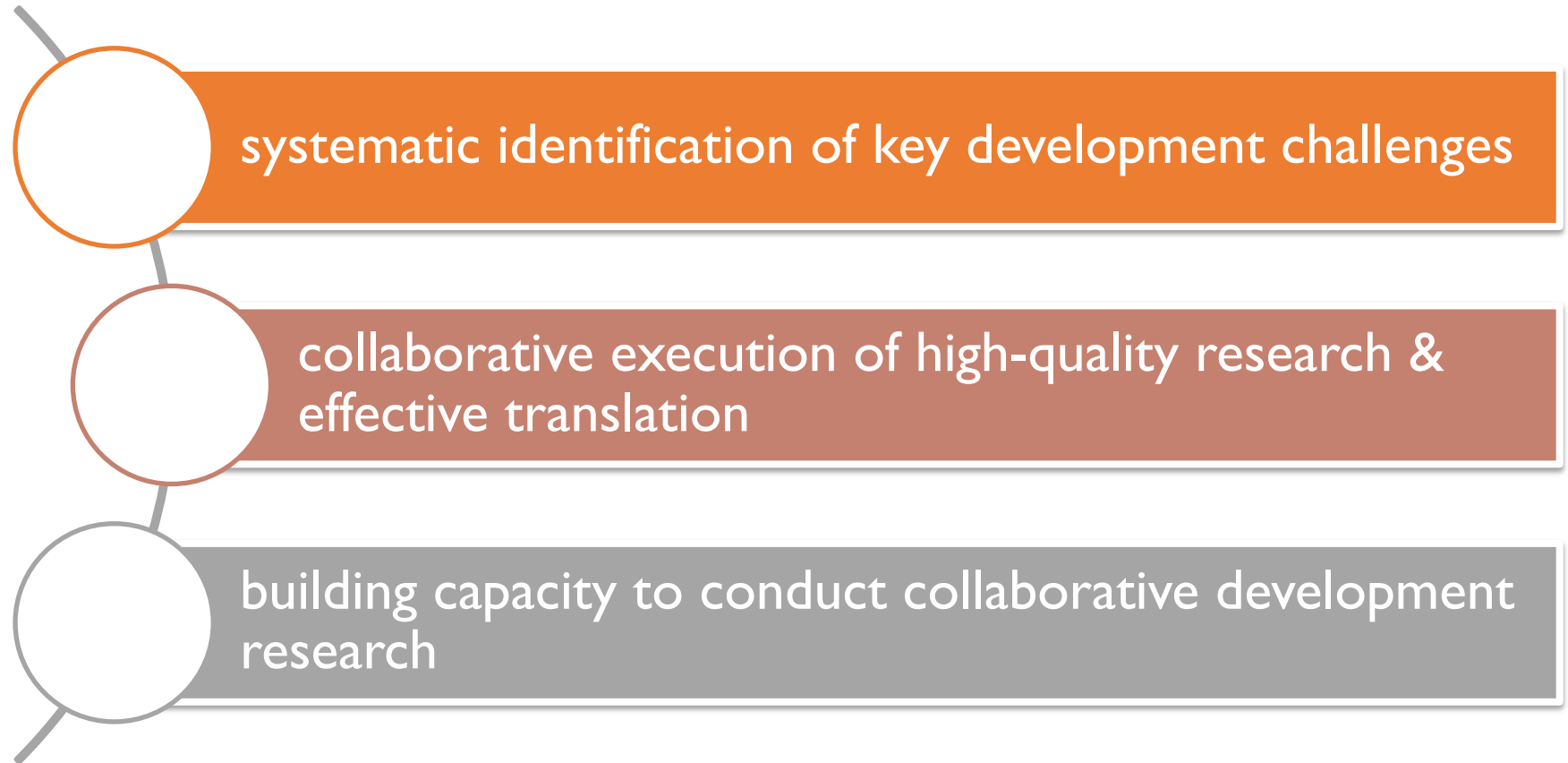
- ❖ LASER PULSE is a 10-year (ending in 2028), \$70M Cooperative agreement funded through USAID's Innovation, Technology, and Research (ITR) Hub.
- ❖ We are one of the largest program in USAID's Higher Education Solutions Network 2.0 (HESN 2.0) portfolio.
- ❖ Consortium partners: Catholic Relief Services (CRS), Indiana University (IU), Makerere University (RAN), and University of Notre Dame (ND), led by Purdue University (Prime).

What is our belief? *(Theory of Change)*



Closer collaboration between academic researchers, development practitioners, policymakers, and donors results in new research that is readily translated into useful policies, products, and practices as evidence-based solutions to development challenges.

What do we want to achieve? *(our objectives)*



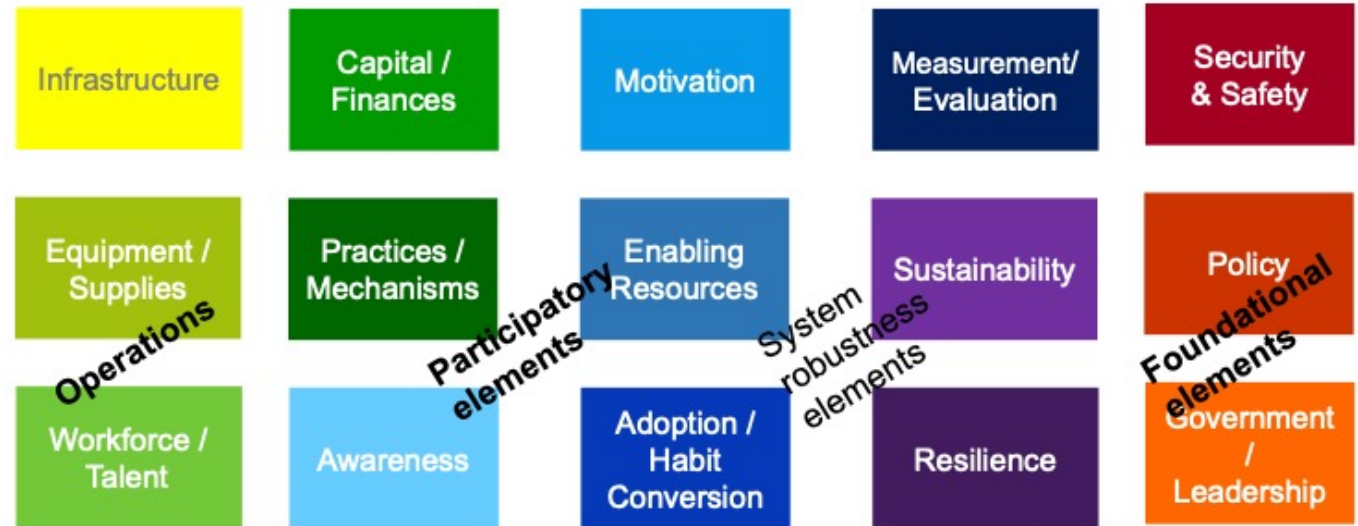
How are we achieving objective 1?



Systematic identification of key development challenges

System Level Analysis (SLA)

helps isolate which are the main gaps that prevent a successful development outcome.

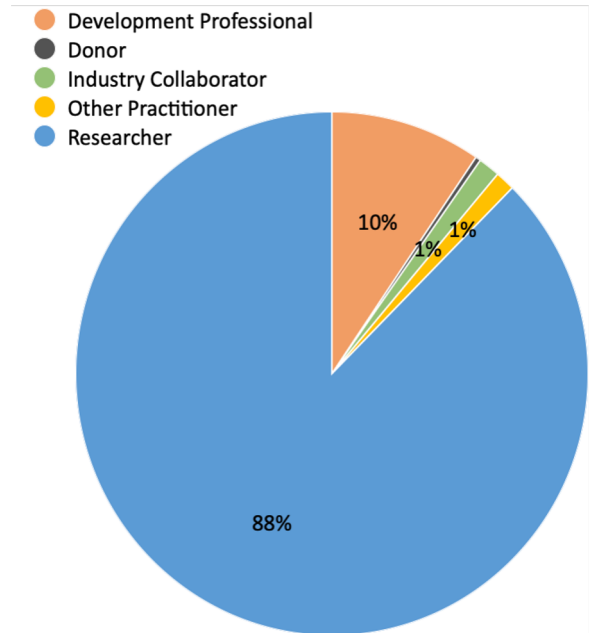
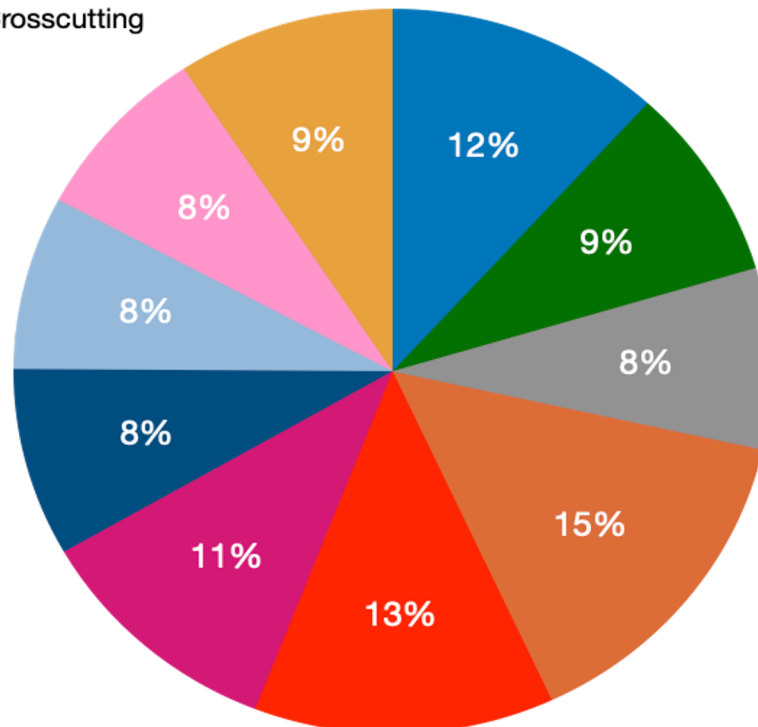


How are we achieving objective 2?



collaborative execution of high-quality research & effective translation

Network: 3000+ researchers and practitioners in 74 countries and around the world, with expertise in all development sectors.



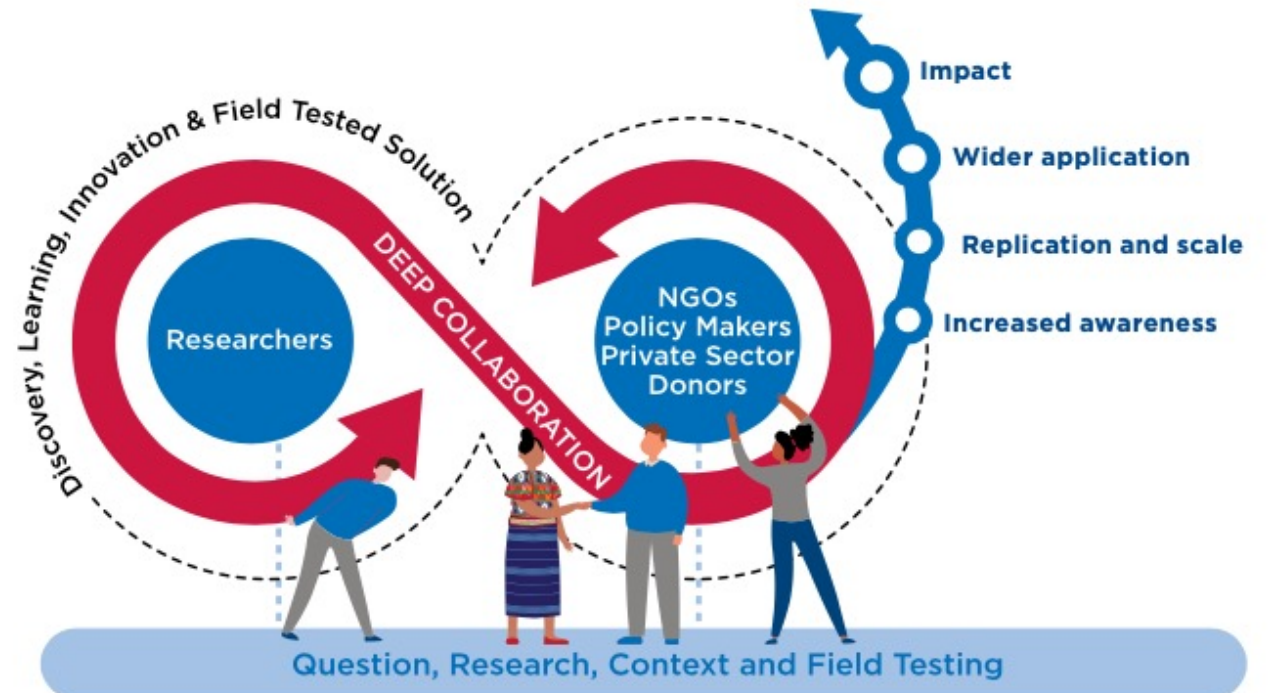
How are we achieving objective 2?



collaborative execution of high-quality research & effective translation

Embedded Research Translation (ERT)

An iterative co-design process among academics, practitioners, and other stakeholders, in which research is intentionally applied to a development challenge.



How are we achieving objective 2?



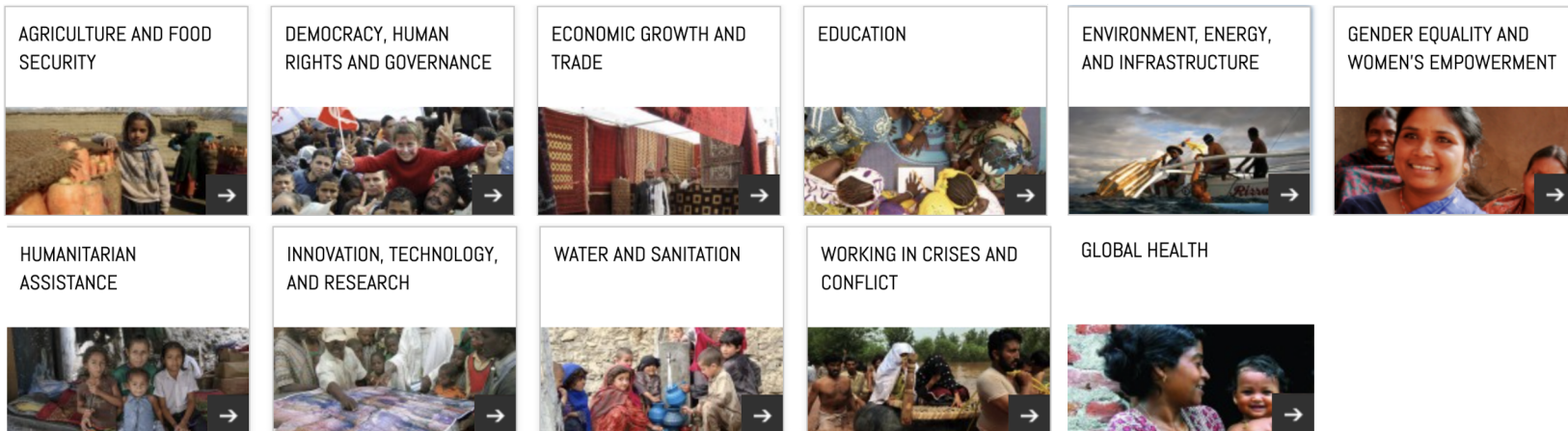
collaborative execution of high-quality research & effective translation

Research funding mechanism: core awards and buy-ins

\$50M in Buy-ins

\$20M mil in core awards and management

Scope: all USAID Sectors and partner countries



How are we achieving objective 3?



building capacity to conduct collaborative development research

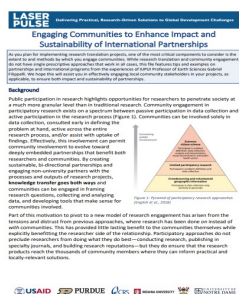
Free access to **online courses**: ERT, Gender Integration, Research translation, LMIC Development research leadership and project management

Free access to **tools and templates**: Policy brief template, Stakeholder mapping and analysis, etc

Partnership with research teams: Co-create program description (Mission Concurrence, Gender review, Environment review), research translation/dissemination plan from the start



ERT stakeholder analysis tool



Community engagement for RT



Research translation implementation planning template



Communications strategy template



Policy brief template



Project summary template



Utilizing accessible language in RT guide



How to plan for and utilize a brief?

Our impact overview



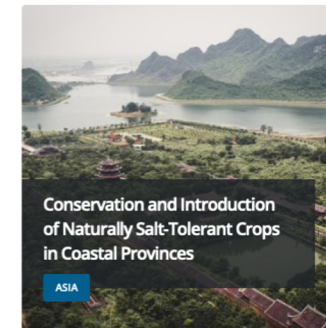
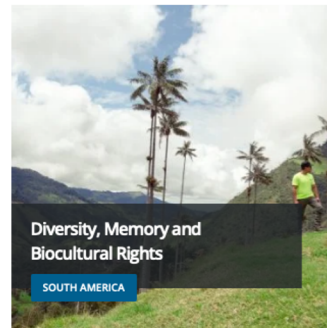
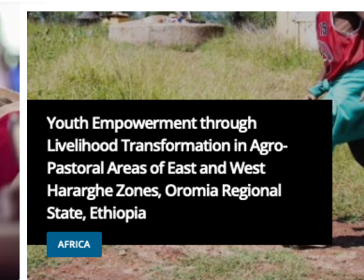
Our research overview

Region

- ☐ Africa (18)
- ☐ Asia (8)
- ☐ Middle East (1)
- ☐ Multi-Country (3)
- ☐ South America (2)

Practice Area

- ☐ Agriculture & Food Security (7)
- ☐ Democracy, Human Rights and Governance (2)
- ☐ Economic Growth & Trade (6)
- ☐ Education (8)
- ☐ Environment, Energy, and Infrastructure (3)
- ☐ Gender Equality and Women's Empowerment (2)
- ☐ Global Health (0)
- ☐ Humanitarian Assistance (3)
- ☐ Innovation, Technology, and Research (3)
- ☐ Water and Sanitation (3)
- ☐ Working in Crises and Conflict (3)





Angella Atukunda
RAN



Harriet Adong
RAN



Priyanka Brunese
Purdue



Sunni Fass
IU



Jeff Goecker
Purdue



Luelsegged Kasa
Purdue



Pamela McClure
Purdue



Ross Meyers
Purdue



Ruth Nsibirano
Makerere



Chris Rice
IU



Fred Rossi
UND



Laura Riddering
CRS



Joe Sinfield
Purdue



Julius Ssentongo
RAN



Nathan Tumuhamy
RAN



Alex Towns
CRS



Marcy Wilson
Purdue

LASER PULSE Management team



Betty Bugusu
Purdue



Pallavi Gupta
Purdue



Suzi Cyr
Purdue



Arvind Raman
Purdue



Yuehwern Yih
Purdue

LASER PULSE Steering Committee



Teshome Alemneh
IU



William Bazeyo
IU



Maureen Capps
CRS



Tony Castleman
CRS



**Kara Wools-
Kalastian**
IU



Roy Mayega
Makerere



Dorothy Okello
Makerere



Paul Perrin
UND



Tom Purekal
UND



Arvind Raman
Purdue



Michael Scanlon
IU



Michael Sweikar
UND



Yuehwern Yih
Purdue

How to engage with LASER PULSE?

Register on with our network at **laserpulse.org**

- ✓ Receive information on upcoming funding opportunity
- ✓ Create partnerships with other researchers and practitioners to collaborate on proposals/ongoing efforts
- ✓ Receive updates on our upcoming webinars/trainings
- ✓ Free access to our online resources
- ✓ Receive our quarterly newsletters

How to engage with LASER PULSE?

If you want to commission our services:



Pallavi Gupta

Program Director, LASER PULSE
gupta604@purdue.edu



Yuehwern Yih

Academic Director, LASER PULSE
yih@purdue.edu



Arvind Raman

Director, LASER PULSE
raman@purdue.edu

Thank You!
Questions?

Pallavi Gupta
gupta604@purdue.edu